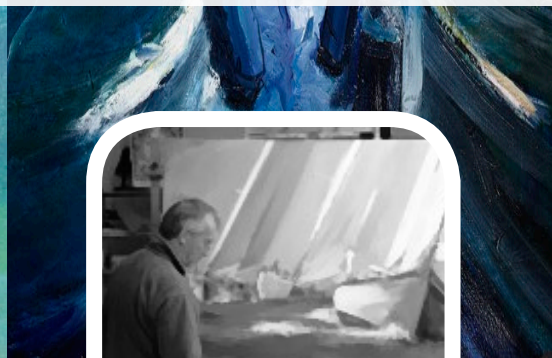
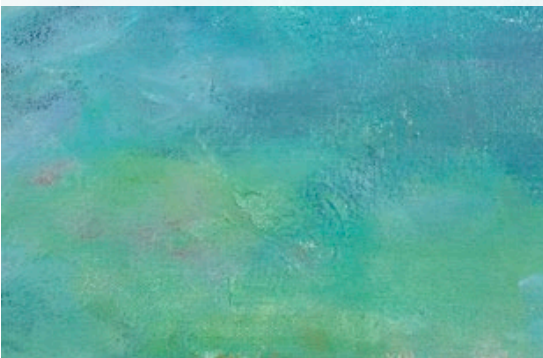
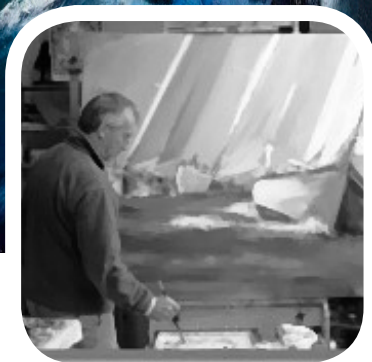


CURT CRAIN



GLENDAL



WISCONSIN

Curt Crain paints mostly in an impressionistic style based on the influence of the European and American artists painting in the late 1840's through the end of the century. He enjoys working thick and fast. He paints from nature, although studio work in his climate seems to work better. He will paint almost anything; he loves moving paint around. His favorite subjects are boats, waterscapes, flowers and people. Most of his work is objective, loosely painted, with liberties taken on detail and color. He strives to say more with less.